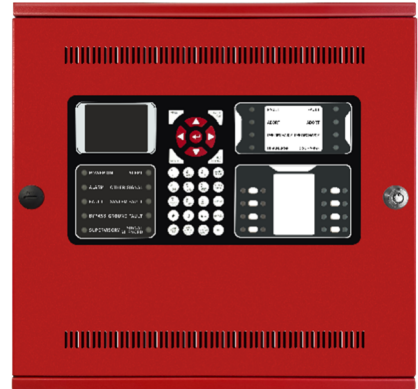


Addressable Mini Agent Release & Fire Alarm Control Panel

FW2107M



Overview

The FW2107M is an intelligent fire suppression control panel designed for fire suppression facilities. It can also be used as an Intelligent Fire Alarm Control Panel (FACP) for small to medium-sized facilities and fits standalone applications and multi-panel networks.

It features a digital signal processor-based design that is fully configurable from the front panel with password protection.

The FW2107M control panel has one Signaling Line Circuit (SLC), two Notification Appliance Circuits (NACs), 3 Form C dry relay contacts dedicated for Alarm, Trouble, and Supervisory.

The FW2822 addressable module supports hazardous agent-releasing applications programmed to the two releasing zones.

The FW2107M is compatible with the Series 2 Maple Armor devices, and it meets the requirements of UL 864, and CAN/ULC-S527.

Features

- 2.8" true color LCD
- 29 Input keys including a keypad with navigation buttons, alpha-numeric buttons, and Function buttons.
- 10 LED indicators, making it a highly intuitive fire alarm interface with a full
- Two releasing zones
- One signaling line circuits (SLC), Class A or Class B. Supporting 252 intelligent devices
- Supports Series 2 intelligent detectors, manual stations, and modules
- Programmable via PC configuration software or Field programmable through front panel.
- Ethernet and USB ports for local programming and firmware upgrade.
- Supports remote annunciators' network for wide system configurations and applications.
- Form C dry relay contacts dedicated for Alarm, Trouble, and Supervisory.
- Supports positive alarm sequence to avoid false alarms
- Configurable for Two Stage operation
- Supports an RS232 and RS485 connections
- Three-levels of password protection with field-programmable definitions enable the installer to determine which functions are accessible at each password level

SYSTEM CONFIGURATION

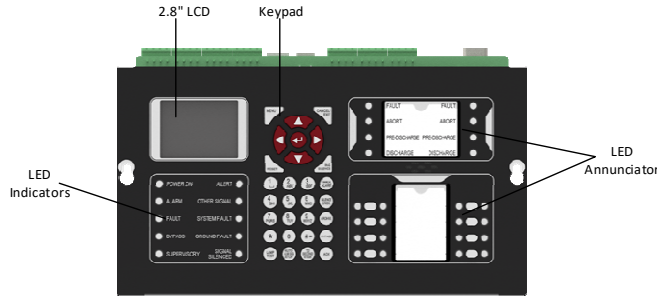
The standard FW2107M control panel comes equipped with MBU and PSU complete with the panel enclosure.

Model	Description	Configurable	Qty	Standby	Alarm
FW2203	MBU (Main Board Unit)	Fixed	1	0.123	0.133
FW2391	PSU (Power Supply Unit)	Fixed	1	0.067	0.067
FW2194M	CPE (Control Panel Enclosure)	Fixed	1	0	0

*All currents are in Ampere

Main Board Unit (MBU)

The main board unit contains the system's CPU, all the primary components, circuit connection terminals, and all user interface LCDs, buttons, and status LEDs.



System Wiring

Addressable Device Loop

The FW2107M control panel supports a single signaling line circuit (SLC) with a capacity of 252 device addresses. The loop features built-in isolation and is supervised for opens, shorts, and grounds.

Circuit Specification	
Loops	Class B or A loop, supporting 252 addressable devices
Output Voltage Range	26 ~ 27 VDC
Standby Current	100 mA max
Alarm Current	250 mA max
Circuit Impedance	20Ω, 0.5 μF, max
Isolators	50 max

Auxiliary Power Outputs

The Power Supply Unit (PSU) provides an auxiliary power output. It can be configured as resettable or non-resettable.

The resettable terminal interrupts the power for seconds after a reset condition. The output is limited to 3.0 A alarm and 650 mA in normal standby maximum.

Circuit Specification	
Outputs	One configurable
Circuit Voltage Range	19.3 – 27.9 VDC
Output Current	650 mA max Standby 3.0 A max Alarm

Notification Appliance Circuits

The FW2107M panel supports 2 notification appliance circuits (NAC), each with a capacity of 252 device addresses. Each circuit is supervised.

Circuit Specification	
Circuits	Class B or Class A
Voltage	24VDC
Circuit Current	2.0 A per circuit or Regulated 1.0 A total
EOLR	10 KΩ
Max line loss	2.2 V
Synchronization	Built-in
Bell code	Steady ANSI Temporal 3 Temporal 4 March Time 20/60/120 bpm

*Voltage drop calculations are required to determine the number of notification appliances per circuit.

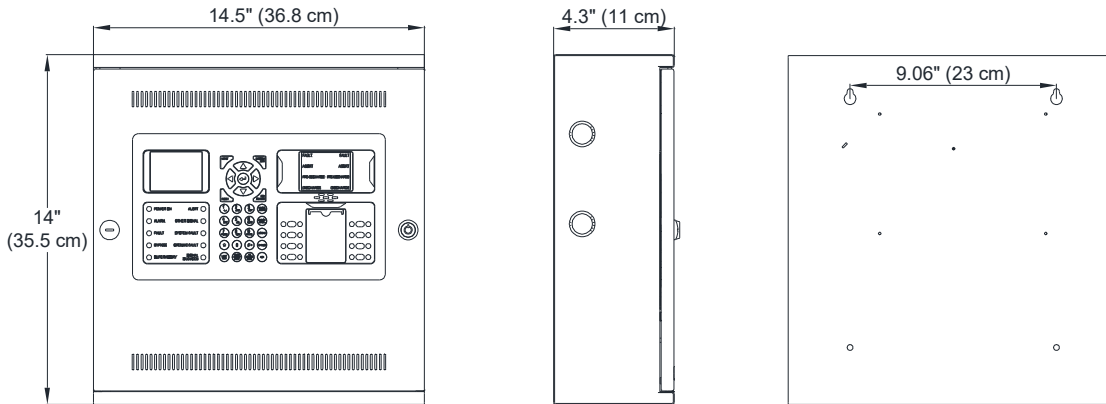
Relay Outputs

The control panel provides three non-programmable relays to connect to remote monitoring stations.

Circuit Specification	
Relay 1	Alarm
Relay 2	Supervisory
Relay 3	Trouble
Contact Rating	30 VDC at 2 A
Type	Form C contacts

Dimensions

The FW2107M features a compact design and suitable for surface and semi-flush installations.

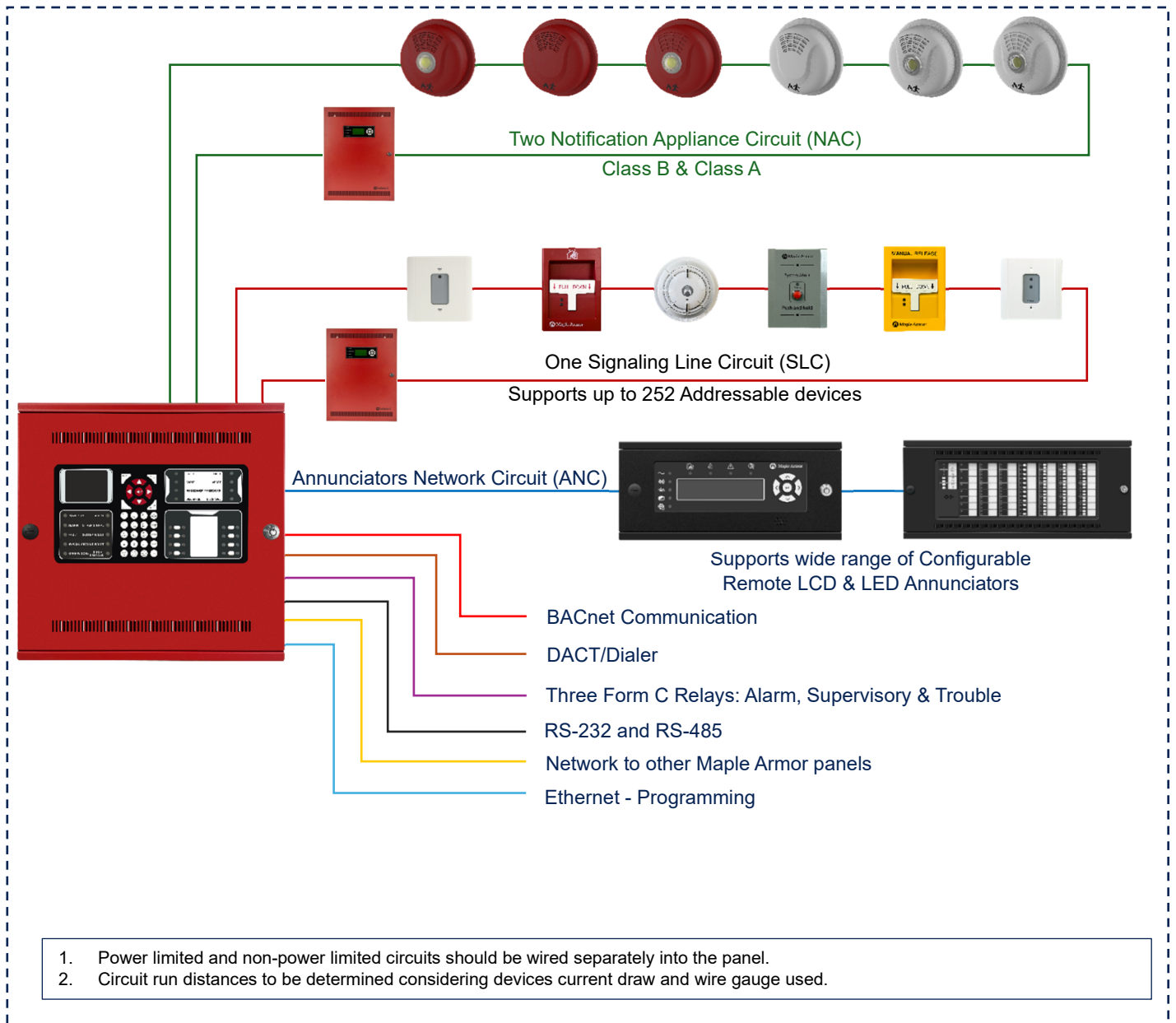


General Specifications

Features	Specification
Primary Supply	110 - 120 VAC 60Hz, 3.2 A max. 220 - 240 VAC 50Hz, 2.0 A max. <i>*Set the switch to the desired option</i>
Secondary Supply Backup battery	Voltage: 24 VDC, Two 12VDC in series Type: Sealed lead acid Charging capacity: 55AH Charging current: 2.8 A max Up to two 7 Ah batteries can fit in the control panel enclosure
Auxiliary power Source	One Power Limited Outputs Output range: 19.3 ~27.9 VDC Output current: 650mA in total (normal standby), 3.0A in total (alarm) Non-Resettable/Resettable Power Output (configurable) Special application: Compatible devices are I/O Module FW2821 & the Supervised Output Module FW2822
Environmental	Operating temperature: 14 - 131°F (-10 - 55°C) Relative humidity: 0 to 95% at 90°F (32°C), non-condensing To be installed in normal dry indoor environment only
Signaling Line Circuit	1 loop, Class A and Class B, supporting up to 252 addressable devices Maximum normal standby current: 100mA Maximum alarm current: 250mA
Notification Appliance Circuits	2 Class A/DCLA and Class B/DCLB circuits, Regulated 1.0 A total, or Special Application 2.0 A each circuit.
Relays Output	Three form C relays: Alarm, Supervisory, and Trouble. Contact Rating: 2A @30VDC, 0.6 pF
Recommended Testing impedence	6.6 KΩ for ground fault 10MΩ for open circuit 0.1 Ω for short circuit

System Layout

The FW2017M comes with below capabilities to serve different system configurations and applications.



Ordering Information

Model	Description
FW2107M	Mini Addressable Release Agent Fire Alarm Control Panel One Signaling Line Circuit (SLC), Two Class A/B Notification Appliance Circuits (NAC)
Replacement Parts	
FW2203	MBU (Main Board Unit)
FW2393	PSU (Power Supply Unit)
FW2194M	CPE (Control Panel Enclosure)
FWPK	Panel key



This document is for marketing and informational purposes only. It is not intended to be used for installation, operation, or maintenance of the device.

Contact us

Phone: 888-257-7718
Email: sales@maplearmor.com
Website: www.maplearmor.com
© Maple Armor 2025 | All rights reserved.

Visit us

8866 Bd du Quartier,
Brossard, QC J4Y 0B4

For complete and accurate installation instructions, wiring details, and operational guidelines, refer to the official Device Installation Sheet provided with the product. The manufacturer reserves the right to make changes to product specifications without prior notice.